

Cristina

YARN

8-10 12-14 16-18 20-22
To fit bust 81-86 91-97 102-107 112-117 cm
32-34 36-38 40-42 44-46 in

Rowan Classic Cotton Jeans

8 9 10 11 x 50gm
(photographed in Batik 377)

NEEDLES

1 pair 4mm (no 8) (US 6) needles
1 pair 4½mm (no 7) (US 7) needles
4mm (no 8) (US 6) circular needle

TENSION

19 sts and 26 rows to 10 cm measured over st st using
4½mm (US 7) needles.

BACK

Using 4½mm (US 7) needles cast on 83 [93: 103: 115] sts.
Beg with a K row, work in st st for 10 rows, ending
with RS facing for next row.

Place motifs

Next row (RS): K5 [7: 9: 11], work next 14 sts as row 1
of chart A, K45 [51: 57: 65], work next 14 sts as row 1
of chart B, K5 [7: 9: 11].

Next row: P5 [7: 9: 11], work next 14 sts as row 2 of
chart B, P45 [51: 57: 65], work next 14 sts as row 2 of
chart A, P5 [7: 9: 11].

These 2 rows set the sts – 2 motif charts with st st
between and at sides.

Cont as set until all 26 rows of charts have been
completed.

Beg with a K row, work in st st until back meas 23 [24:
25: 26] cm, ending with RS facing for next row.

Shape armholes

Cast off 6 [7: 8: 9] sts at beg of next 2 rows.
71 [79: 87: 97] sts.

Dec 1 st at each end of next 3 [5: 7: 9] rows, then on foll
3 [3: 2: 2] alt rows, then on foll 4th row. 57 [61: 67: 73] sts.
Cont straight until armhole meas 20 [21: 22: 23] cm,
ending with RS facing for next row.

Shape shoulders and back neck

Cast off 5 [5: 6: 7] sts at beg of next 2 rows.
47 [51: 55: 59] sts.

Next row (RS): Cast off 5 [5: 6: 7] sts, K until there are
8 [10: 10: 11] sts on right needle and turn, leaving rem
sts on a holder.

Work each side of neck separately.

Cast off 4 sts at beg of next row.

Cast off rem 4 [6: 6: 7] sts.

With RS facing, rejoin yarn to rem sts, cast off centre
21 [21: 23: 23] sts, K to end.

Complete to match first side, reversing shapings.

LEFT FRONT

Using 4½mm (US 7) needles cast on 34 [39: 44: 50] sts.

Beg with a K row, work in st st as folls:

Work 1 row, ending with WS facing for next row.

Inc 1 st at beg of next row and at same edge on foll
6 rows, then on foll alt row, ending with RS facing for
next row. 42 [47: 52: 58] sts.

Place motif

Next row (RS): K5 [7: 9: 11], work next 14 sts as row 1
of chart A, K23 [26: 29: 33].

Next row: P23 [26: 29: 33], work next 14 sts as row 2
of chart A, P5 [7: 9: 11].

These 2 rows set the sts – motif chart with st st at sides.
Cont as set until all 26 rows of charts have been

completed.

Beg with a K row, work in st st until 4 rows less have been worked than on back to beg of armhole shaping, ending with RS facing for next row.

Shape front slope

Dec 1 st at end of next and foll alt row. 40 [45: 50: 56] sts.

Work 1 row, ending with RS facing for next row.

Shape armhole

Cast off 6 [7: 8: 9] sts at beg and dec 1 st at end of next row. 33 [37: 41: 46] sts.

Work 1 row.

Dec 1 st at armhole edge of next 3 [5: 7: 9] rows, then on foll 3 [3: 2: 2] alt rows, then on foll 4th row **and at same time** dec 1 st at front slope edge on next [next: next: 3rd] and foll 1 [0: 0: 0] alt row, then on 2 [3: 3: 3] foll 4th rows. 22 [24: 27: 30] sts.

Dec 1 st at front slope edge **only** on 2nd and 7 [7: 8: 8] foll 4th rows. 14 [16: 18: 21] sts.

Cont straight until left front matches back to beg of shoulder shaping, ending with RS facing for next row.

Shape shoulder

Cast off 5 [5: 6: 7] sts at beg of next and foll alt row.

Work 1 row.

Cast off rem 4 [6: 6: 7] sts.

RIGHT FRONT

Using 4½mm (US 7) needles cast on 34 [39: 44: 50] sts.

Beg with a K row, work in st st as folls:

Work 1 row, ending with WS facing for next row.

Inc 1 st at end of next row and at same edge on foll 6 rows, then on foll alt row, ending with RS facing for next row. 42 [47: 52: 58] sts.

Place motif

Next row (RS): K23 [26: 29: 33], work next 14 sts as row 1 of chart B, K5 [7: 9: 11].

Next row: P5 [7: 9: 11], work next 14 sts as row 2 of chart B, P23 [26: 29: 33].

These 2 rows set the sts – motif chart with st st at sides. Complete to match left front, reversing shapings.

MAKING UP

Press as described on the information page.

Join both shoulder seams using back stitch, or mattress stitch if preferred.

Neckband

With RS facing and using 4mm (US 6) needles, beg and ending at beg of front slope shaping, pick up and knit 58 [60: 63: 65] sts up right front slope, 30 [30: 32: 32] sts from back, then 58 [60: 63: 65] sts down left front slope. 146 [150: 158: 162] sts.

Row 1 (WS): K2, *P2, K2, rep from * to end.

Row 2: P2, *K2, P2, rep from * to end.

Rep these 2 rows 3 times more, ending with WS facing for next row.

Cast off in rib (on WS).

Armhole borders (both alike)

With RS facing and using 4mm (US 6) needles, pick up and knit 86 [94: 100: 106] sts evenly all round armhole edge.

Beg with a P row, work in st st for 10 rows, ending with WS facing for next row.

Cast off purlwise (on WS).

Join side and armhole border seams.

Hem and front border

With RS facing and using 4mm (US 6) circular needle, beg and ending at beg of front slope shaping, pick up and knit 33 [35: 37: 39] sts down left front opening edge to last inc, 12 sts along shaped row-end edge, 33 [38: 43: 49] sts from left front cast-on edge, 83 [93: 103: 115]

sts from back, 33 [38: 43: 49] sts from right front caston edge, 12 sts along shaped row-end edge to last inc, then 33 [35: 37: 39] sts up right front opening edge. 239 [263: 287: 315] sts.
 Beg with a P row, work in st st for 10 rows, ending with **WS** facing for next row.
 Cast off purlwise (on **WS**).
 Allowing last 2 rows of hem and front border to roll to **RS**, sew row-end edges of neckband and hem and front borders together.

Chart A

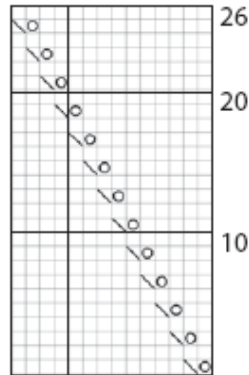
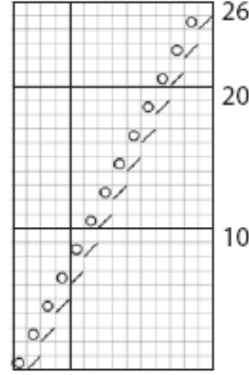


Chart B



Key

- | | |
|---|--|
| <input type="checkbox"/> K on RS, P on WS | <input checked="" type="checkbox"/> K2tog |
| <input checked="" type="checkbox"/> yfwd | <input checked="" type="checkbox"/> sl1K, k1, pss0 |

