

Candis

Knitting pattern for short sleeve sweater



Short sleeve sweater

Sizes	S	M	L	XL	XXL
Quality SONORA	No. of balls				
Eclat 219.851	5	5	6	6	6
Quality ANGEL					
Blanc cassé 294.881	1	1	1	1	1
3.5mm and 4.0mm needles					

Getting started

Stitches used

MOSS STITCH, using 3.5 mm needles

Row 1: *k1, p1* rep from *to* ending with k1

Row 2: *k1, p1* rep from *to* ending with k1

LACE STITCH, using 4.0 mm needles. Over a number of sts divisible by 14 (+3).

Row 1 (rs): k2, *yfwd, k5, sl 2, k1, pssso 2 sl sts, k5, yfwd, k1* rep from *to* ending with k2 instead of 1.

Row 2: purl, working each yfwd as ptbl.

Repeat these 2 rows.

Stripes: Work 6 rows Sonora, 8 rows Angel.

Repeat these 14 rows.

Tension/gauge

To achieve a good result it is essential to make a tension square.

21.5 sts & 22 rows using Lace St & 4.0 mm needles = 10cm (4in) square.

18 sts & 32 rows using Moss St & 4.0 mm needles = 10cm (4in) square.

To make Back:

□ Using Sonora & 4.0 mm needles cast on **105-115-123-133-143** sts. Work in Striped Lace St starting & ending as foll:

S & XL: k4 instead of 2.

M & XXL: As explanation.

L: k6 instead of 2.

Armholes:

□ When work measures **45-46-46-47-48** cm [**98-100-100-102-104** rows] total cast off at the beg of every row as foll:

S: 3 sts twice, 2 sts 4 times, 1 st 12 times.

M: 3 sts twice, 2 sts 6 times, 1 st 10 times.

L: 3 sts twice, 2 sts 6 times, 1 st 12 times.

XL: 3 sts 4 times, 2 sts 6 times, 1 st 12 times.

XXL: 3 sts 6 times, 2 sts 6 times, 1 st 12 times.

Cont on the rem **79-87-93-97-101** sts.

Attention: 2 yfws must be compensated for by a sl 2, k1, pssso 2 sl sts; 1 yfwd must be compensated by k2tog at beg of row or sl 1, k1, pssso at end of row.

Neck:

□ When work measures **62-64-66-68-70** cm [**136-142-146-150-154** rows] total cast off the central **31-33-35-37-39** sts & working each side separately cast off 3 sts at neck edge once.

Shoulder:

□ When work measures **64-66-68-70-72** cm [**140-146-150-154-158** rows] total cast off the rem **21-24-26-27-28** sts.

To make Front:

Start as for Back.

Armholes:

□ Cast off at same height as for Back.

Neck:

□ When work measures **57-59-61-63-65** cm [**24-130-134-138-142** rows] total, work **29-32-34-35-36** sts, cast off the central **21-23-25-27-29** sts, work to end.

□ **Next row (ws):** Work to cast off sts & put rem sts on a stitch holder. Work will now be completed in 2 sections.

□ Cont to cast off at beg of every rs row (neck edge) as foll: 3 sts once, 2 sts once, 1 st 3 times.

Shoulder:

□ Cast off as for Back.

□ With ws facing pick up sts from stitch holder & work as for Right Front rev shaping.

To make Sleeves:

□ Using 3.5 mm needles & Sonora cast on **57-61-67-73-77** sts. Work in Moss St.

□ When work measures 3cm (1in) [10 rows] total form shoulder cap by casting off as foll:

S: 3 sts at beg of next 2 rows, 2 sts at beg of next 2 rows, 1 st at beg of next 6 rows, *work 2 rows straight, then cast off 1 st at beg of next 2 rows* rep from *to* 5 times, then cast off 1 st at beg of next 8 rows, 2 sts at beg of next 2 rows, 3 sts at beg of next 2 rows then rem 11 sts.

M: 3 sts at beg of next 2 rows, 2 sts at beg of next 2 rows, 1 st at beg of next 6 rows, *work 2 rows straight, then cast off 1 st at beg of next 2 rows* rep from *to* 4 times, then cast off 1 st at beg of next 10 rows, 2 sts at beg of next 4 rows, 3 sts at beg of next 2 rows then rem 11 sts.

L: 3 sts at beg of next 2 rows, 2 sts at beg of next 4 rows, 1 st at beg of next 10 rows, *work 2 rows straight, then cast off 1 st at beg of next 2 rows* rep from *to* 4 times, then cast off 1 st at beg of next 6 rows, 2 sts at beg of next 2 rows, 3 sts at beg of next 4 rows then rem 11 sts.

XL: 3 sts at beg of next 2 rows, 2 sts at beg of next 4 rows, 1 st at beg of next 12 rows, *work 2 rows straight, then cast off 1 st at beg of next 2 rows* rep from *to* 4 times, then cast off 1 st at beg of next 6 rows, 2 sts at beg of next 4 rows, 3 sts at beg of next 4 rows then rem 11 sts.

XXL: 3 sts at beg of next 2 rows, 2 sts at beg of next 6 rows, 1 st at beg of next 8 rows, *work 2 rows straight, then cast off 1 st at beg of next 2 rows* rep from *to* 4 times, then cast off 1 st at beg of next 10 rows, 2 sts at beg of next 4 rows, 3 sts at beg of next 4 rows then rem 11 sts.

To make Neck border:

□ Using 3.5 mm needles & Sonora cast on **89-93-97-101-105** sts. Work in Moss St for 6 rows then leave on a spare needle.

To make up:

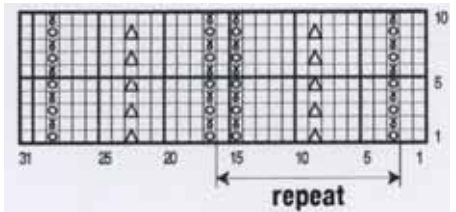
□ Join shoulder seams.

□ Graft border around neck edge then sew side seam – see grafting instructions on landing page.

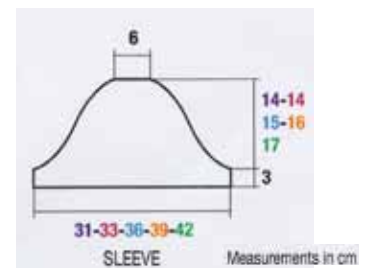
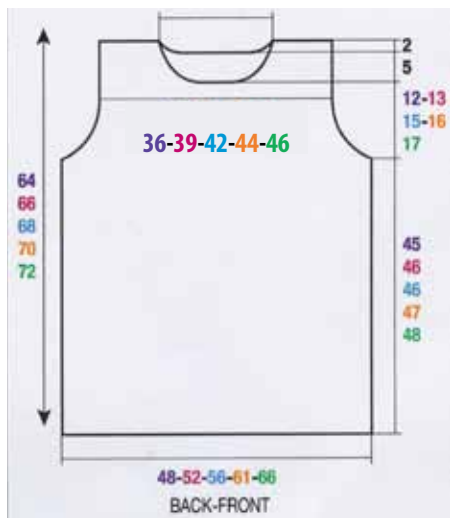
□ Sew sleeves into place, then sew side and sleeve seams.

Candis

LACE ST



□ = knit ω = sl 2, k1, pass over 2 sl sts
 ⊗ = yfwd ⊖ = 1 st worked tbl



Pattern supplied by Bergere de France. Featured design is 740 from the new Creations 2013/14 collection. For stockists of Bergere de France yarns go to bergeredefrance.co.uk or email hello@bergeredefrance.com.